

De Grey Mining Ltd

A.B.N. 65 094 206 292

21 April 2016

ASX/MEDIA RELEASE

Update on Tantalum and Lithium Potential at Turner River

- **Confirmed presence of pegmatites**
- **Rock chip and stream sediment samples taken with all assay results pending**

De Grey Mining Ltd (ASX: DEG, "De Grey", "Company") provides the following update to shareholders regarding initial reconnaissance rock chip and stream sediment sampling at the Turner River Project (TRP), located approximately 50km south of Port Hedland in the Pilbara, Western Australia .

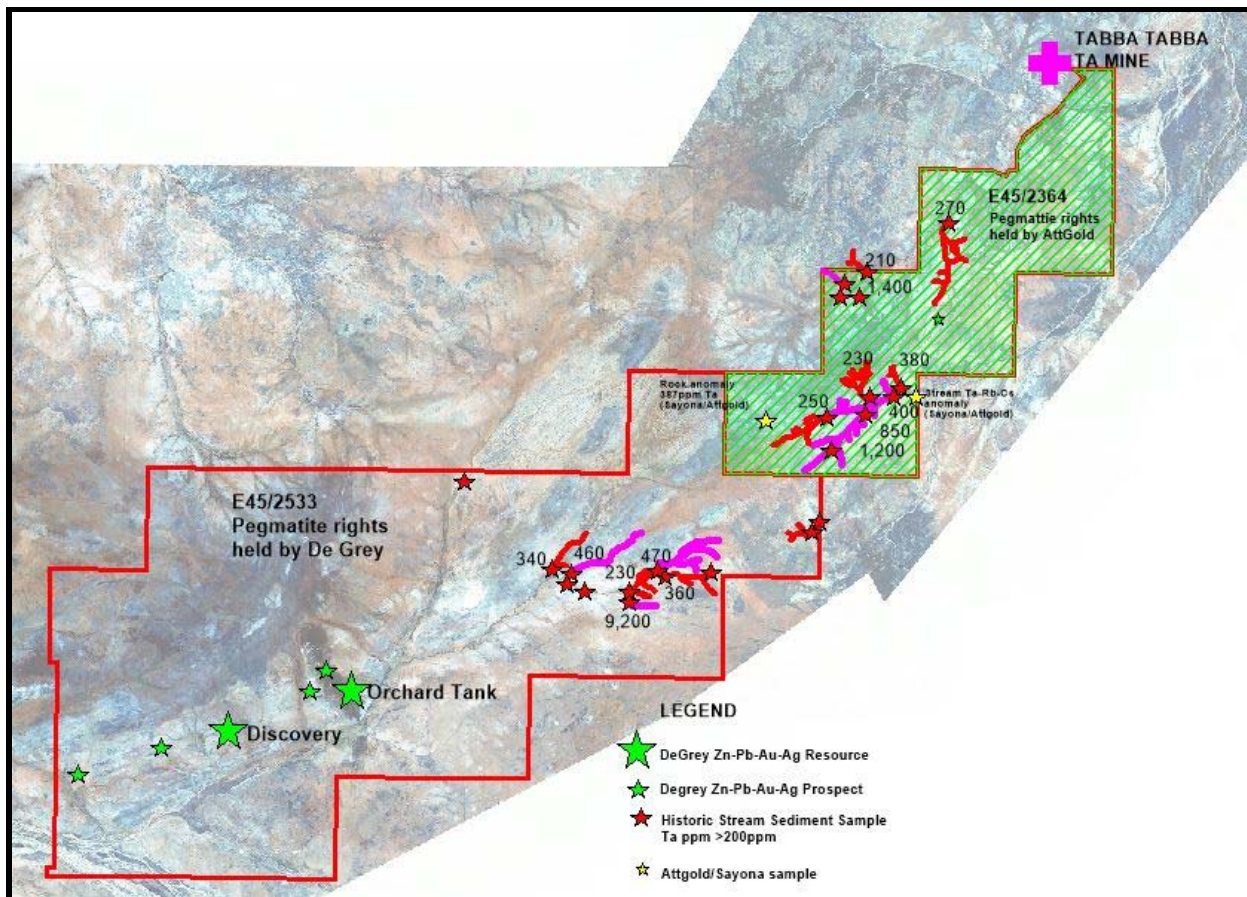
We refer to the Company's previous announcement of 21 March 2016 which is headlined "Tantalum and Lithium potential at Turner River", where the Company advised that it intended to complete mapping to locate any outcropping pegmatites, rock chip sampling and further stream sediment sampling throughout E45/2533.

Samples were despatched 18 April 2016 following completion of initial first pass reconnaissance rock chip and stream sediment sampling throughout the eastern half of E45/2355. The sampling focussed on the eastern half of the tenement where historic stream sediment sampling (Fig 1) has defined a north east trending zone of tantalum. This programme has confirmed the presence of a number of poorly outcropping pegmatites within the margin of the granites bordering the greenstone belt and to a lesser extent within the greenstone belt itself.

All samples have now been despatched and are currently in transit to the laboratory with all assay results pending and will be reported when finalised.



Figure 1 Tenement E45/2533 and E45/2364 showing pegmatite rights, Tabba Tabba Mine location, anomalous historical Ta stream sediment results and De Grey's Zn-Pb-Au-Ag resources and prospects



For further information:

Simon Lill (Chairman) or Craig Nelmes (Company Secretary/CFO)

De Grey Mining Ltd
Phone +61 9381 4108

Davide Bosio
Director
+61 8 9263 5210